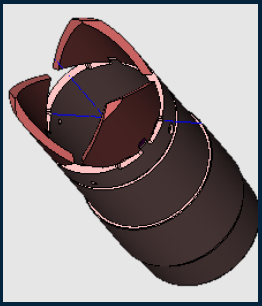




TALON Full Closure System

RECOVERY COUNTS

In modern exploration projects the data from core has become more important than ever before. Foothills Resource Services has developed the TALON™ Full Closure Core System to better service the coring industry.



Blades open and ready to grab the core

SUPERIOR DESIGN

Inspired by nature, the TALON™ was designed as improvement over archaic style clamshell systems. The device incorporates sharp blades, designed to exert maximum PSI on a small area to shear the core in place.

The conical blades used in place of clamshells of the past penetrate the core upon activation. The hydraulic sleeve drives the blades closed and retains the core until it can be recovered at surface.

ANY FORMATION – ANY TEMPERATURE

Designed to be fully compatible with the Foothills Resource Services X2500 Core Barrels, the TALON™ is built to withstand the most extreme environments making it the perfect choice in geothermal, HPHT and the rigorous conditions encountered offshore.

ULTRA RELIABLE

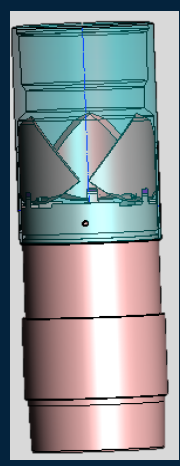
Utilizing proven activation methods the tool provides a unique series of quantifiable feedback right at the surface to monitor the closure process from start to finish.

POSITIVE ACITVATION

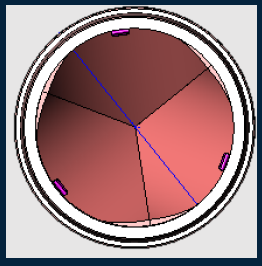
- Uses industry standard and proven ball drop activation,
- Once the ball is seated the hydraulic activation is initiated.
- Upon activation a pressure increase is noticed at surface
- A slight pressure decrease marks the activation of the catcher
- Once fully closed, the pressure will drop back to normal indicating that the core is ready to be retrieved.

LOW MAINTAINENCE

- No seals required to avoid any issues with temperature
- Easily set for multiple runs right in the field for low cost of use
- Tool has no nylon, rubber or plastic parts
- Made from 100% high quality western sourced materials



Blades fully retract into the body for unrestricted entry



Cone closes 100% to fully encapsulate the core column inside the inner tube

